

panoramic views of downtown

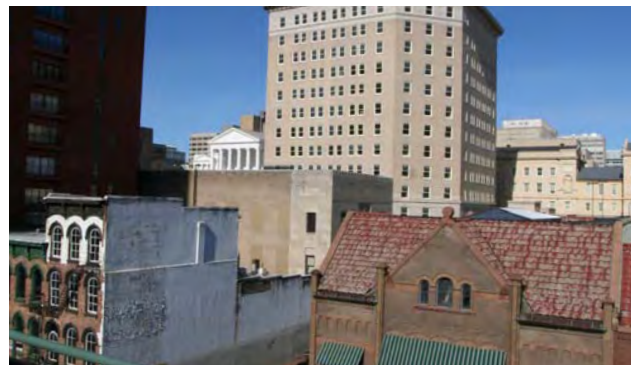


Is that.....?

The Capital Building, Main Street Station, Lucky Strike, Bank of America...yes it is.

Outdoor space in the city is truly captivating when done well and Gotham does outdoor space exquisitely. With some of the most amazing views in the city, the private deck offers expansive and panoramic views of downtown.

Live. Entertain. Relax. Enjoy.



\*All information deemed reliable but not guaranteed.

AGENT: Rick Jarvis, 804.305.7722  
EMAIL: [rick.jarvis@onesouthrealty.com](mailto:rick.jarvis@onesouthrealty.com)

AGENT: Kyli Bingham, 804.399.1680  
EMAIL: [kyli.bingham@onesouthrealty.com](mailto:kyli.bingham@onesouthrealty.com)

1435 WEST MAIN STREET  
RICHMOND, VIRGINIA 23220  
[www.onesouthrealty.com](http://www.onesouthrealty.com)

804.353.0009  
804.353.0991 FAX





two story entry foyer



The Gotham Condominiums features personality and today's conveniences in a high style renovation of this historic building. State of the art security system with elevator takes you directly to your penthouse unit. Step inside and experience this extraordinary two-story condo with dramatic light and an open floor plan. A striking kitchen featuring granite countertops and contemporary cabinets are perfect for entertaining. Slip away into a luxurious bath with jetted tub. Journey onto the outdoor patio and enjoy the incredible views of the city all day long. Experience the finest of city living in the Gotham Penthouse.



### The Story

In the early 2000's, the development partners at REO Enterprises approached The Johanna Design Group with a concept for a building that challenged the boundaries of traditional Richmond in both style and location. Gotham was born.

With roots in the larger metro areas of New York City and Chicago as well as the West Coast, the development team sought to create a building that blended urban contemporary into the bones of an 1800's era structure. The result of this collaboration was 8 residential spaces that uniquely combined old and new in Richmond's traditional financial district.

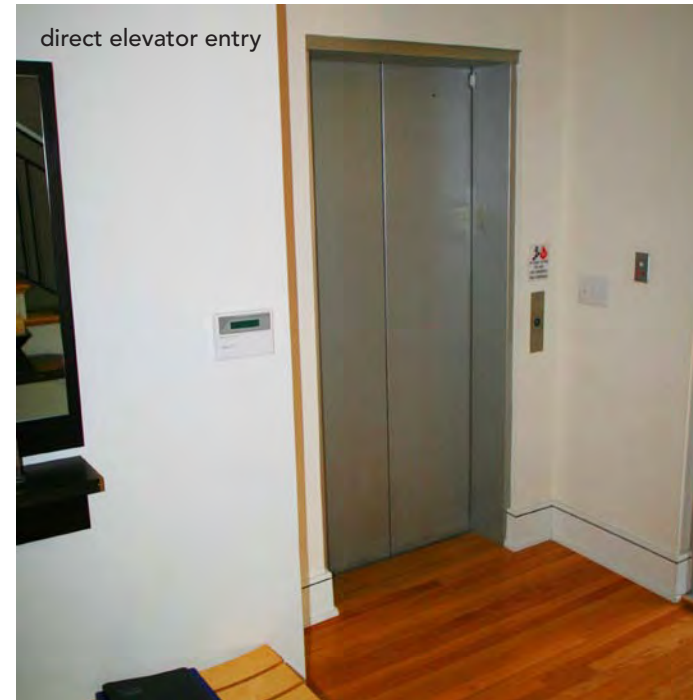
Creative use of sliding glass door systems and open architecture allowed natural light to permeate interior spaces. By placing the public spaces above the private ones, the developers were able to make the spectacular views an integral part of daily living.

Gotham is truly unique.

skyline views from living space



direct elevator entry



1205 East Main Street  
Richmond, Virginia 23219  
Unit 4E | Penthouse  
\$439,000

- » Built 1820/Renovated 2002
- » 2 bedrooms | 2.5 Baths
- » 1,586 +/- SF
- » Condo Dues \$190
- » Reserved Parking paid for 2 years
- » Tax abatement
- » Dues include water, sewer, insurance, exterior maintenance, community utilities, janitorial, management fees, reserves and trash removal

### FEATURES

- » Kitchen Renovated in 2006
- » Luxury Appliance Package, GE Monogram, Dacor
- » Heat Pump/Central Air
- » Wood Floors
- » Granite Tops
- » Zebrano wood cabinets
- » Tile Baths
- » Jetted Tub
- » Basement Storage

